



McAfee® Wireless Protection Quick-Start Guide

Blocks Hackers from Attacking Your Wireless Network

McAfee Wireless Protection blocks hackers from attacking your wireless network. Wireless Protection can be configured and accessed from McAfee® SecurityCenter™. The Quick-Start Guide is provided to you to learn more about:

- [Getting Started](#)
- [How to Access Your Product](#)
- [What's New and How to Use](#)
- [Making Sure You're Secure](#)



McAfee® Wireless Protection Quick-Start Guide

Getting Started

Your McAfee product and SecurityCenter make protecting your computer simple. Here is more information about how to install:

Installing Your Product from a CD	Installing Your Product from Our Web Site
<ol style="list-style-type: none"> 1. Insert your product CD into your CD-ROM drive. 2. The McAfee installation screen should appear automatically. If it does not, click Start on your Windows desktop, then click Run. In the Run dialog box, type D:\SETUP.EXE (where D is the letter of your CD-ROM drive). Click OK. 	<ol style="list-style-type: none"> 1. Go to the McAfee web site, and click My Account. 2. If prompted, enter your McAfee email address and password, and then click Log In to open your Account Info page. 3. Locate your product in the list, and click the Download Icon. 4. Review and accept the EULA. 5. Click Download to download Download Manager. 6. Follow the prompts to run Download Manager.

For More Information

<p>> Insert your product CD into your CD-ROM drive.</p>	<p>> Open Windows Explorer: Click Start on your Windows desktop, and click Search.</p>	<p>> Locate the Manuals folder, and double-click the User Guide .PDF you want to open.</p>
--	---	---



McAfee® Wireless Protection Quick-Start Guide

How to Access Your Product

After installation, McAfee programs start automatically and run in the background. To open SecurityCenter, do any of the following:

1. Double-click the **Desktop Icon**.
2. Click **Start**, select **All Programs** (or Programs), select **McAfee**, then select **McAfee SecurityCenter**.
3. Double-click the **M** icon in the system tray, near the time display.



Once you have opened SecurityCenter, you can view your installed McAfee products by clicking the **View Details** link in the lower right corner of the console. Your McAfee products can be managed directly within SecurityCenter.



McAfee® Wireless Protection Quick-Start Guide

What's New and How to Use

Learn the best way to take advantage of McAfee's "load and go" settings by reading more about the features below.

- McAfee SecurityCenter
- Wireless Protection
- Network Manager
- EasyNetwork
- PC Health and Performance
- McAfee® SiteAdvisor™
- McAfee® Shredder

What's New: McAfee SecurityCenter

Your product plugs into the re-designed McAfee SecurityCenter, so you now have one place to view your computer's protection status.





McAfee® Wireless Protection Quick-Start Guide

How To Use SecurityCenter

Upon installation, SecurityCenter will display a fully protected security status with a green checkmark. If your protection status changes throughout the course of your subscription, you will be prompted by McAfee with the recommended security actions to get your status back to green. The three different levels of security status are provided below.



What's New: Wireless Network Protection

Your product includes Wireless Network Protection that eliminates networking hassles and wireless security risks. Its trusted protection that blocks hackers from attacking your Wi-Fi® network, safeguards your personal information and transactions, and prevents others from using your network to access the Internet – all with a single click.

How to Use: Wireless Network Protection

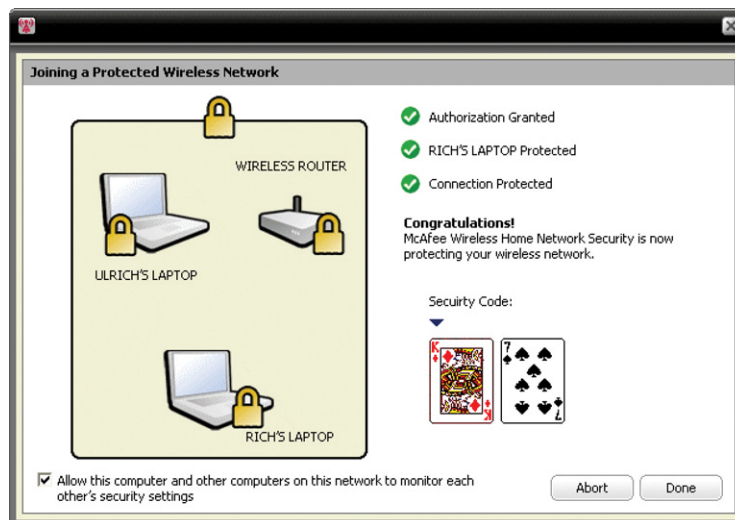
You can access Wireless Network Protection from a few locations. The wireless icon in your system tray, the Wireless Home Network desktop icon, from your programs menu or via McAfee SecurityCenter.





McAfee® Wireless Protection Quick-Start Guide

Once you access Wireless Network, you can simply allow your friends and family to connect to your secure wireless network. You can also use a USB drive or CD/DVD to easily grant access to your network. Improved Intelligent Alerts notify you instantly of computers trying to connect to your protected wireless network.



What's New: McAfee Network Manager

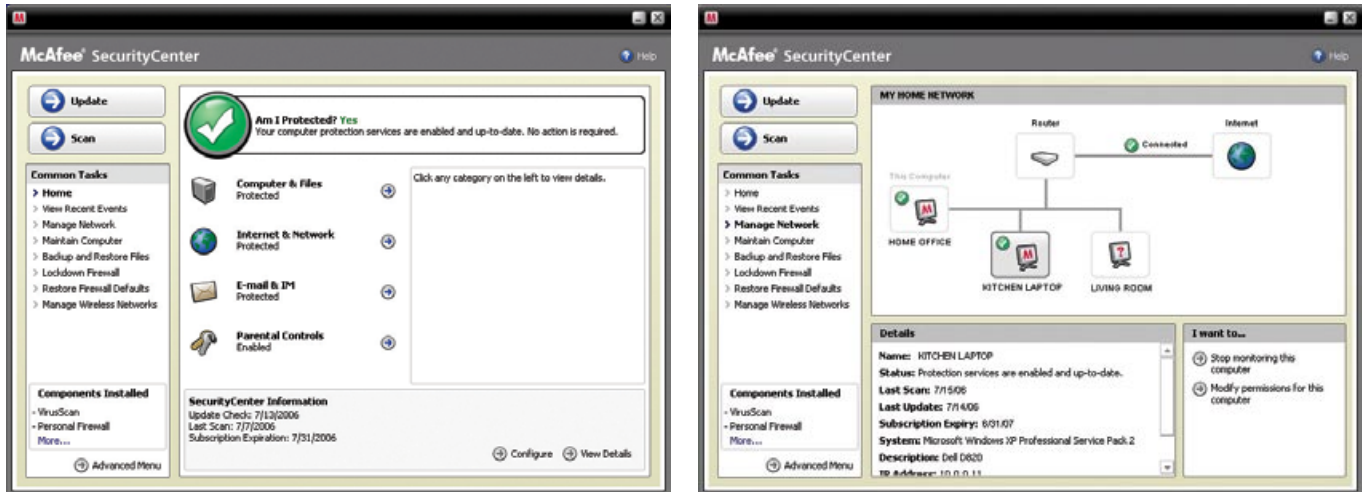
McAfee Network Manager presents a graphical view of the computers and components that make up your home network. You can use Network Manager to remotely monitor the protection status of each managed computer in your network and to remotely fix reported security vulnerabilities on those managed computers.

How to Use: McAfee Network Manager

Launch **Network Manager** from the SecurityCenter list of Common Tasks. The network map provides a graphical representation of the computers and components that make up your home network. To configure Network Manager – please refer to the Advanced Menu within SecurityCenter.



McAfee® Wireless Protection Quick-Start Guide

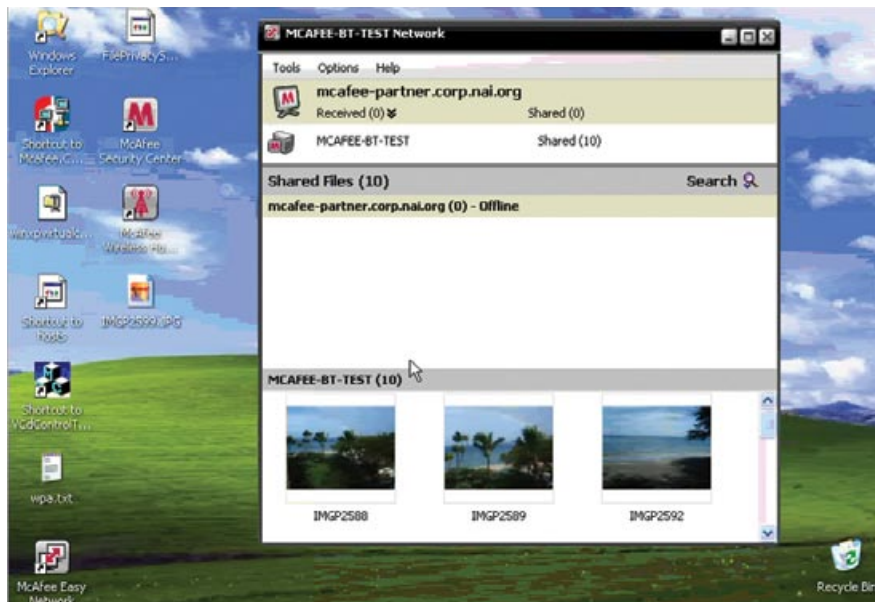


What's New: McAfee EasyNetwork

McAfee EasyNetwork allows you to share files and printers among the computers in your home network.

How to Use: McAfee EasyNetwork

Double-click the **McAfee EasyNetwork** desktop icon to start EasyNetwork. To learn more about how to configure this feature, please refer to the Advanced Menu within SecurityCenter.





McAfee® Wireless Protection Quick-Start Guide

What's New: PC Health and Performance Tools

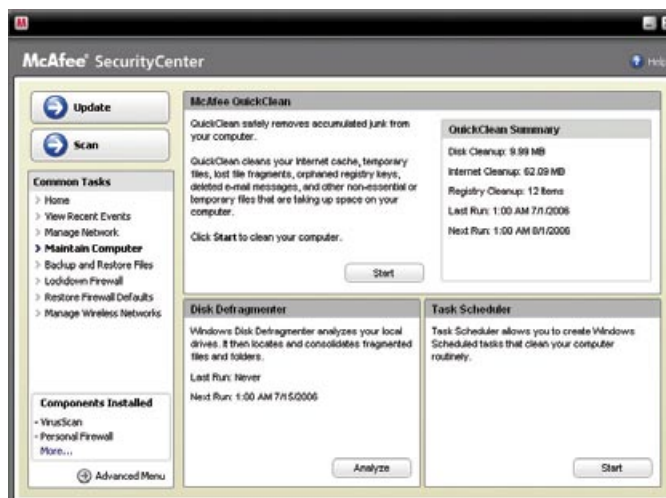
Your product includes PC health and performance tools that help optimize your PC, keeping it clean and running smoothly. With these built-in tools, you can safely remove unnecessary junk files and other temporary files. Also, you can use “Disk Defragmenter” to defragment your PC and “Task Scheduler” to schedule a regular time to automatically run cleaning tasks.

How to Use: PC Health and Performance Tools

Access these features from the **Common Tasks > Maintain Computer** section.



Click **Maintain Computer**.



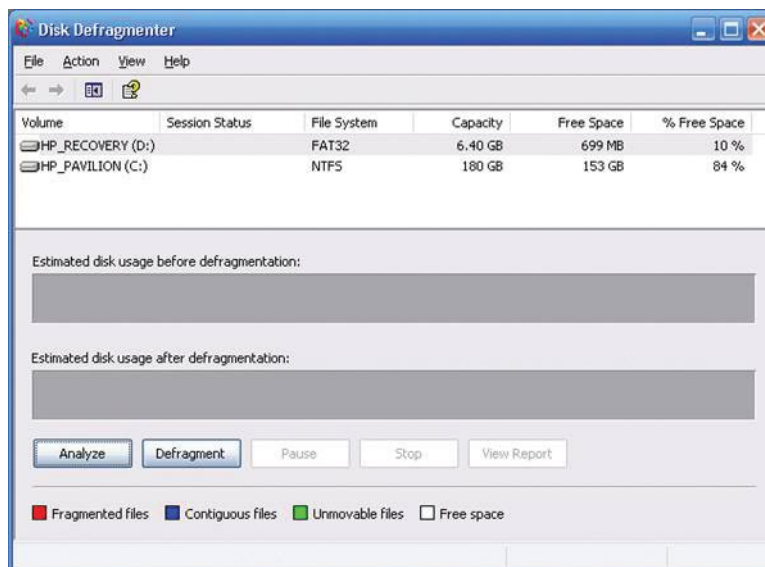


McAfee® Wireless Protection Quick-Start Guide

You can remove accumulated junk from your computer by simply clicking **Start** under the McAfee QuickClean section.

You can start the defrag process on your hard drive by clicking the **Analyze** button.

While performing a disk defrag, you will see this screenshot.



After the analysis is complete, click **Defragment** to defrag your hard drive.

You can set an exact time and date for your computer to automatically clean your PC.





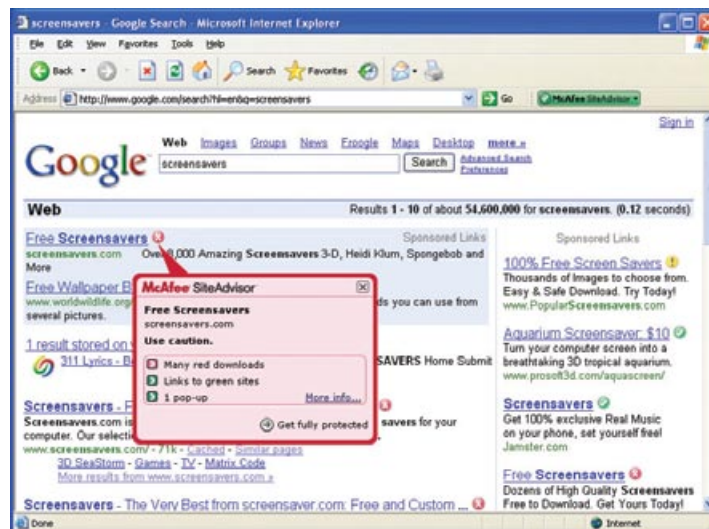
McAfee® Wireless Protection Quick-Start Guide

What's New: McAfee SiteAdvisor

SiteAdvisor adds safety ratings to sites and search engine results based on comprehensive spam, adware, and online scam safety tests.

How to Use: McAfee SiteAdvisor

Once downloaded and installed SiteAdvisor does all the work for you. When searching with Google, Yahoo!, MSN, or others, SiteAdvisor's safety ratings appear next to search results and a small button in the browser toolbar changes color based on SiteAdvisor's security tests.



What's New: McAfee Shredder

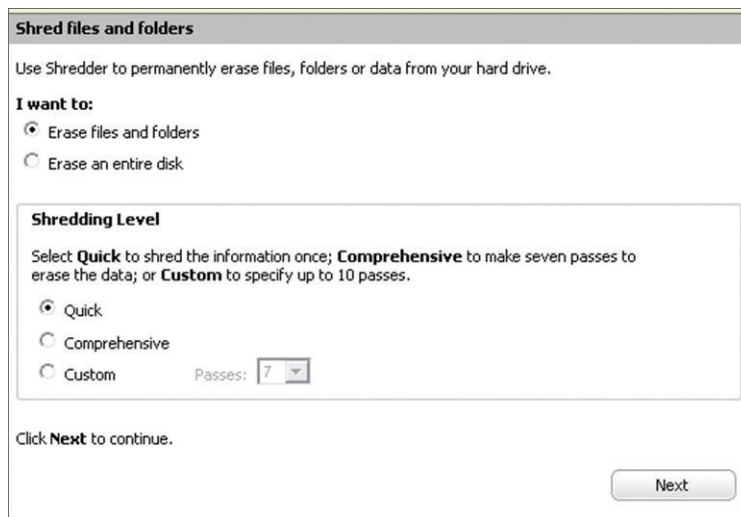
Shredder allows you to digitally “shred” confidential files, effectively removing all traces of files from your PC, especially useful when passing on, selling, or simply discarding older PCs. This new feature enhances your privacy by helping to eradicate the digital footprints left behind by erased files that hackers or other unauthorized users can access.

How To Use: McAfee Shredder

Select **Shredder** under “**Tools**”, you can easily erase files, folders or even an entire disk.



McAfee® Wireless Protection Quick-Start Guide

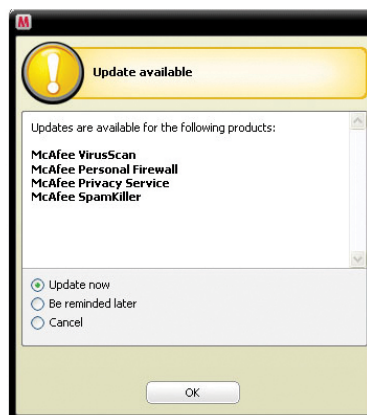


Making Sure You're Secure

McAfee makes sure you are always secure by continuously and automatically upgrading and updating your protection.

Automatic Software Updates and Upgrades

As long as your subscription is active, SecurityCenter will automatically upgrade your McAfee programs whenever new or improved features become available.





McAfee® Wireless Protection Quick-Start Guide

Protection Status and Security Alerts

SecurityCenter also informs you with a Protection Manager Alert whenever your security status changes to yellow or red. When you see one of these alerts, click the **Balloon** or **Icon** to open SecurityCenter, so you can review and react to the issue.

