



McAfee® Total Protection Quick-Start Guide

Peace of Mind for Your Entire Family

McAfee Total Protection is the most comprehensive protection available offering 10-in-1 protection from PC and online threats. It also includes PC and network tools, plus McAfee® SiteAdvisor™ for safe surfing.

Total Protection can be configured and managed using McAfee® SecurityCenter™. To learn more about how to use Total Protection, please refer to:

- [Getting Started](#)
- [How to Access Your Product](#)
- [What's New and How to Use](#)
- [Making Sure You're Secure](#)



McAfee® Total Protection Quick-Start Guide

Getting Started

Your McAfee product and SecurityCenter make protecting your computer simple. Here is more information about how to install:

Installing Your Product from a CD	Installing Your Product from Our Web Site
<ol style="list-style-type: none"> 1. Insert your product CD into your CD-ROM drive. 2. The McAfee installation screen should appear automatically. If it does not, click Start on your Windows desktop, then click Run. In the Run dialog box, type D:\SETUP.EXE (where D is the letter of your CD-ROM drive). Click OK. 	<ol style="list-style-type: none"> 1. Go to the McAfee web site, and click My Account. 2. If prompted, enter your McAfee email address and password, and then click Log In to open your Account Info page. 3. Locate your product in the list, and click the Download Icon. 4. Review and accept the EULA. 5. Click Download to download Download Manager. 6. Follow the prompts to run Download Manager.

For More Information

<p>> Insert your product CD into your CD-ROM drive.</p>	<p>> Open Windows Explorer: Click Start on your Windows desktop, and click Search.</p>	<p>> Locate the Manuals folder, and double-click the User Guide .PDF you want to open.</p>
--	---	---



McAfee® Total Protection Quick-Start Guide

How to Access Your Product

After installation, McAfee programs start automatically and run in the background. To open SecurityCenter, do any of the following:

1. Double-click the **Desktop Icon**.
2. Click **Start**, select **All Programs** (or Programs), select **McAfee**, then select **McAfee SecurityCenter**.
3. Double-click the **M** icon in the system tray, near the time display.



Once you have opened SecurityCenter, you can view your installed McAfee products by clicking the **View Details** link in the lower right corner of the console. Your McAfee products can be managed directly within SecurityCenter.



McAfee® Total Protection Quick-Start Guide

What's New and How to Use

Learn the best way to take advantage of McAfee's "load and go" settings by reading more about the features below.

- McAfee® SecurityCenter™
- Virus, Spyware, and Other Automatic Protection
- One-Click Scan and Update Feature
- Firewall Protection
- PC Health and Performance
- Backup & Restore
- Email, IM and Spam Protection
- Parental Controls
- Identity Protection
- McAfee® SiteAdvisor™
- Wireless Protection
- Network Manager
- EasyNetwork (3 User)
- McAfee® Shredder

What's New: McAfee SecurityCenter

Your product plugs into the re-designed McAfee SecurityCenter, so you now have one place to view your computer's protection status.





McAfee® Total Protection Quick-Start Guide

How To Use SecurityCenter

Upon installation, SecurityCenter will display a fully protected security status with a green checkmark. If your protection status changes throughout the course of your subscription, you will be prompted by McAfee with the recommended security actions to get your status back to green. The three different levels of security status are provided below.



What's New: Anti-Virus, Anti-Spyware, and Other Protection

Your product offers the following new and improved features:

- **Improved scanning:** faster anti-virus and anti-spyware scanning.
- **SystemGuards:** monitors for activities that might indicate that a virus or spyware is attempting to install on your PC.
- **McAfee® X-Ray for Windows:** detects and removes rootkits, which are designed to hide from Windows and make it easy for spyware to install on your PC without your knowledge.
- **Buffer overflow protection:** blocks buffer overflow attacks on your PC.
- **Script Scanner:** blocks drive-by downloads and similar exploits from attacking your PC.
- **WormStopper:** prevents unknown email applications from sending worms without your knowledge.

How to Use: Anti-Virus, Anti-Spyware, and Other Protection

Your product is pre-configured to offer ideal security protection and requires no action to work properly. If you are an advanced user and you want to re-configure your product, please refer to the Advanced Menu.



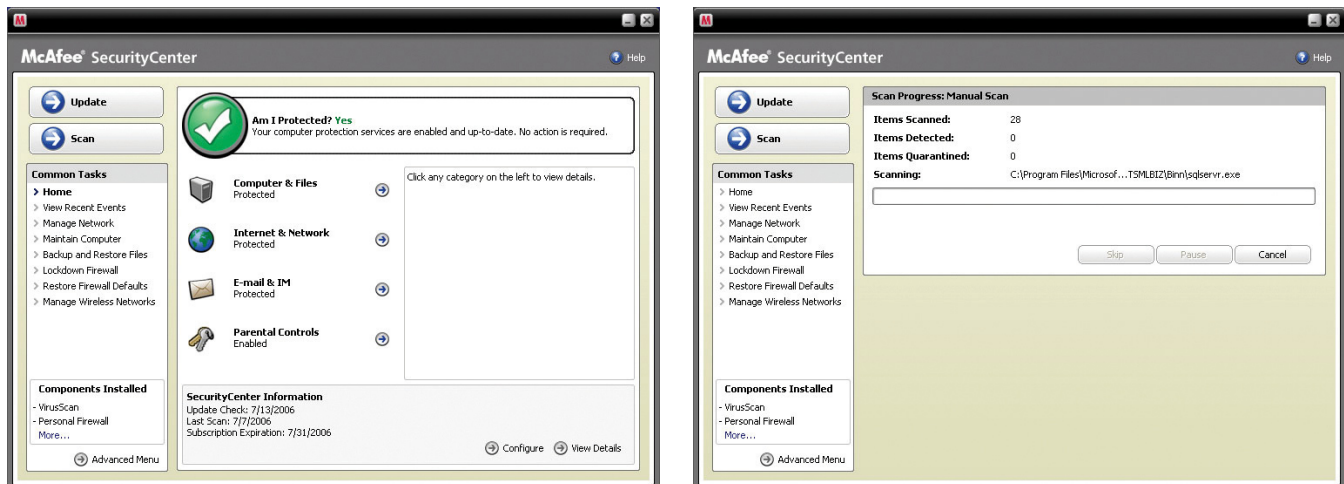
McAfee® Total Protection Quick-Start Guide

What's New: One-Click Scan and One-Click Update

Your product automatically monitors your computer for viruses, spyware, and other threats. By default, SecurityCenter also runs a scheduled scan once a week.

How to Use: One-Click Scan and One-Click Update

If you would like to run a manual scan, click the **Scan** button.



When you are connected to the Internet, SecurityCenter automatically checks for updates and upgrades and installs them automatically. If you want to check for updates manually, click the **Update** button. Be sure that you are connected to the Internet before checking for updates.

What's New: Improved Firewall Protection

Your McAfee product gives you complete inbound and outbound security that automatically trusts known good programs and helps block known spyware, Trojans, and key loggers. The firewall also defends against hacker probes and attacks, monitors Internet and network activity, alerts you to hostile or suspicious events, and provides detailed information about Internet traffic. The firewall features “Stealth Mode,” which allows you to use the Internet and stay under the radar of hackers or anyone who might want to target you or your computer.



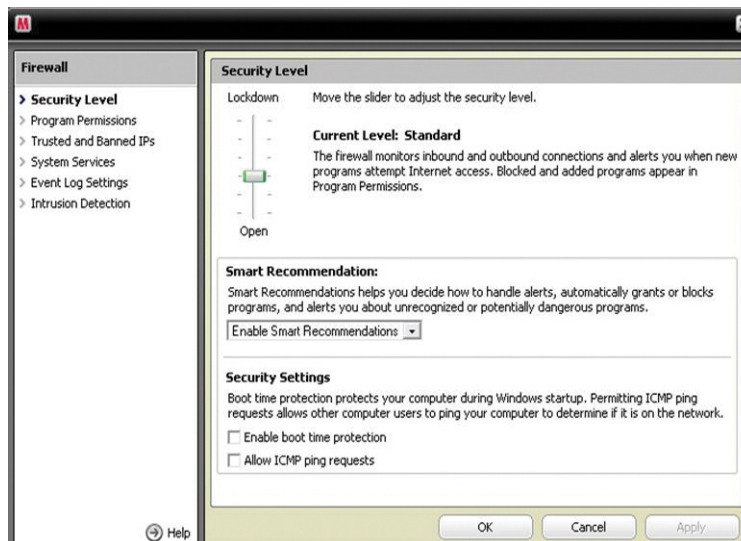
McAfee® Total Protection Quick-Start Guide

How to Use Firewall Protection

The firewall protection is pre-configured and requires no action by you. If you are a technically savvy user and want to re-configure firewall, please refer to the Advanced Menu within SecurityCenter.

How to Use Stealth Mode

You can switch to Stealth Mode by clicking **Internet & Network** from the main SecurityCenter console. Click the **Configure** feature, and then under Firewall protection, click **Advanced**. Look for the Security Level slide. You can increase your security level depending on how hidden you want to be. If you want to turn Stealth Mode on, move the gauge to Stealth.



What's New: PC Health and Performance Tools

Your product includes PC health and performance tools that help optimize your PC, keeping it clean and running smoothly. With these built-in tools, you can safely remove unnecessary junk files and other temporary files. Also, you can use “Disk Defragmenter” to defragment your PC and “Task Scheduler” to schedule a regular time to automatically run cleaning tasks.



McAfee® Total Protection Quick-Start Guide

How to Use: PC Health and Performance Tools

Access these features from the **Common Tasks > Maintain Computer** section.



Click **Maintain Computer**.



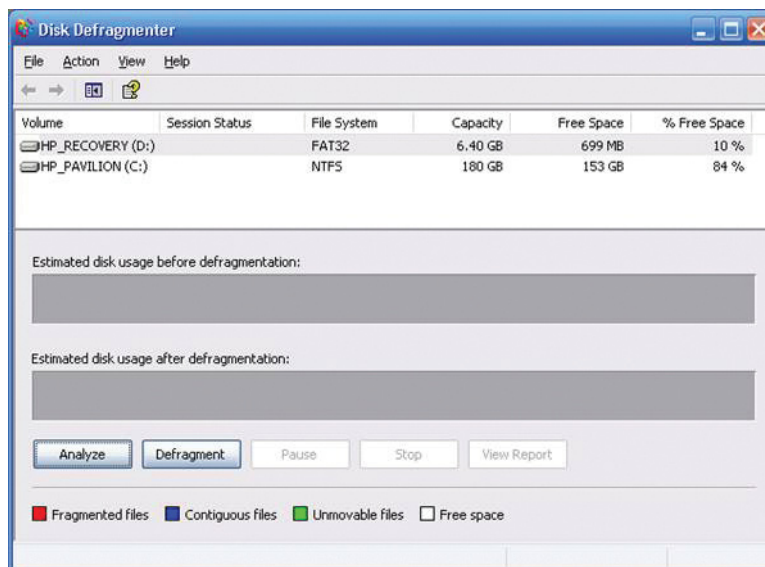
You can remove accumulated junk from your computer by simply clicking **Start** under the McAfee QuickClean section.



McAfee® Total Protection Quick-Start Guide

You can start the defrag process on your hard drive by clicking the **Analyze** button.

While performing a disk defrag, you will see this screenshot.



After the analysis is complete, click **Defragment** to defrag your hard drive.

You can set an exact time and date for your computer to automatically clean your PC.





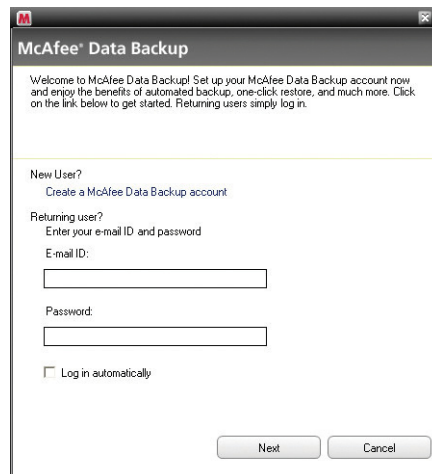
McAfee® Total Protection Quick-Start Guide

What's New: Back Up & Restore

This feature saves copies of your most valuable files wherever you want, encrypting and storing your files on a CD/DVD, or USB, external, or network drive.

How to Use: Back Up & Restore

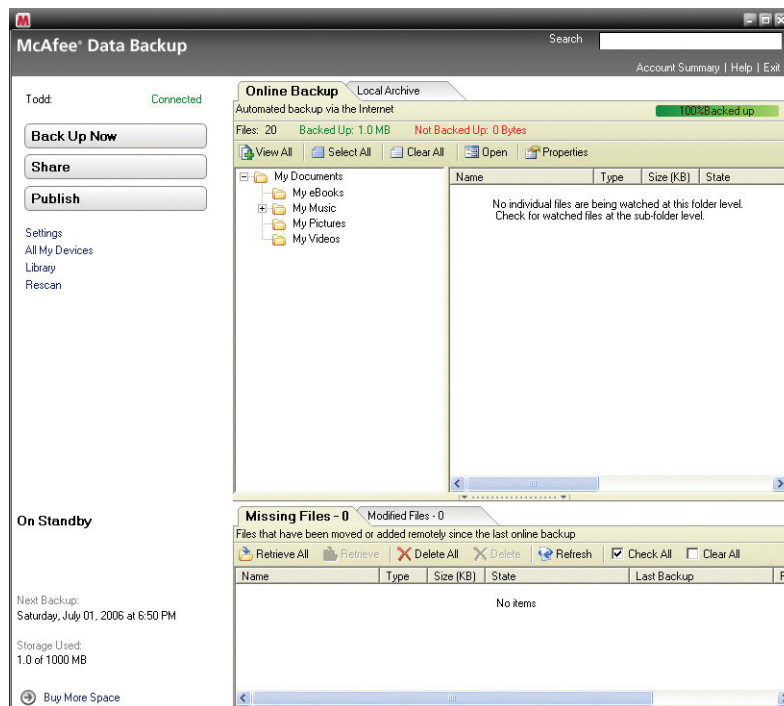
Select the **Backup & Restore** option under Common Tasks. Create your McAfee Backup account, by clicking **Create a McAfee Data Backup Account**.



From there select the files and/or folders you wish to have backed up and select the **Back Up Now** button in the upper left corner.



McAfee® Total Protection Quick-Start Guide



What's New: Improved Email, IM and Spam Protection

Your McAfee product also offers the following new and improved features:

- Email and IM Virus Protection scans inbound and outbound emails and IM including attachments and zip files using a “deep” scan rather than a standard scan. With enhanced worm protection preventing unknown email applications from sending an email without your knowledge.
- Email and IM Spyware Protection now acts as a firewall for your emails and IMs. With Script Scanner, which blocks drive-by downloads and similar exploits from attacking your PC and WormStopper, which prevents unknown email applications from sending worms without your knowledge, you can email and IM with your friends and family safely.
- Spam Protection includes improved message alerting, extensive filtering and SpamKiller, which keeps your network free of spam for higher productivity and reduces spam-related risks.



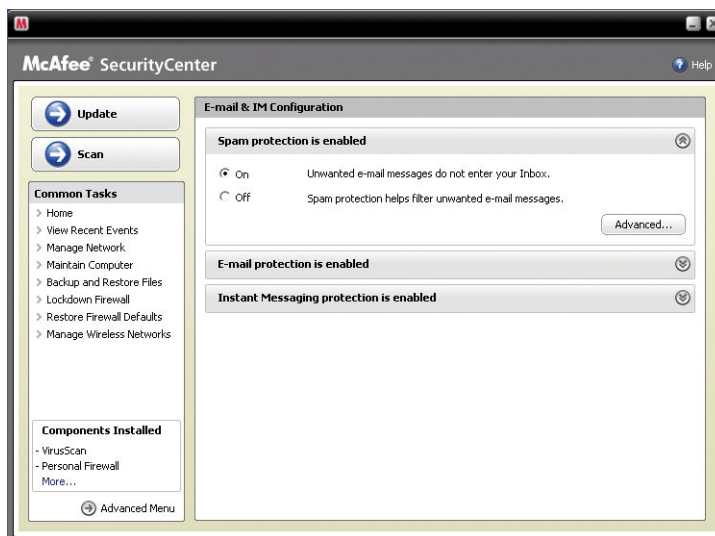
McAfee® Total Protection Quick-Start Guide

How To Use: Email, IM and Spam Protection

From the main SecurityCenter console click **Email & IM** and then click on **Configure** in the lower right hand section.



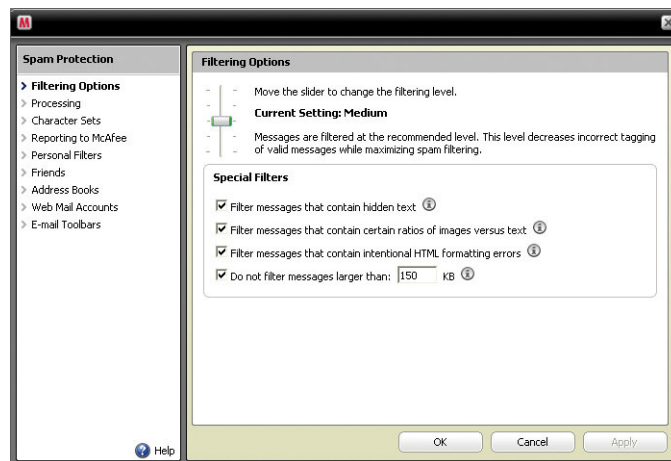
From here you can choose your Email & IM options by selecting the preferred tabs and then click **Advanced**.





McAfee® Total Protection Quick-Start Guide

From this example for Spam Protection you can select the filtering options best suited for your needs and then click **OK**.



What's New: Parental Controls

Your product includes Parental Controls enhanced content protection which now also protects your family from offensive content and photos with McAfee® Image Analysis.

How to Use: Parental Controls

You can access Image Analysis or any of the Parental Control features - click the **Parental Controls** section on the main SecurityCenter page and select the **Configure** option.



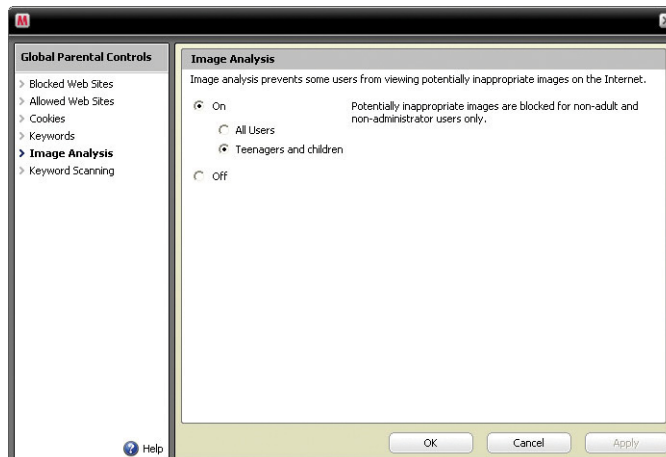


McAfee® Total Protection Quick-Start Guide

Once you are at the Parental Controls Configuration page select the **Advanced** option to access all the Parental Controls features.



Select **Image Analysis** and choose your most appropriate setting for this feature.



What's New: Identity Protection

Identity Protection secures your identity while online or connected to the Internet. This includes McAfee® Password Vault and McAfee SiteAdvisor.

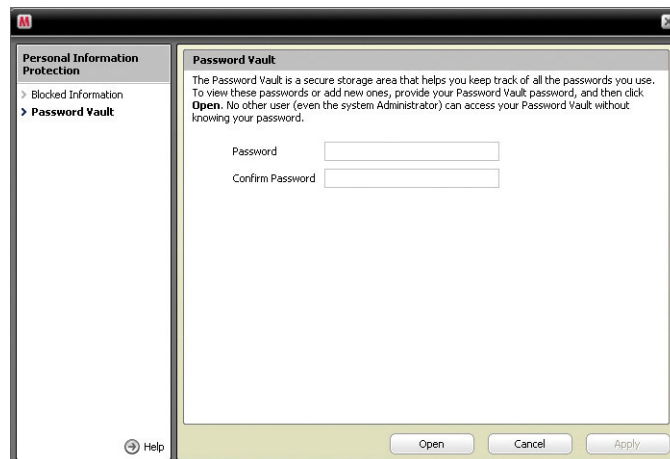
McAfee Password Vault allows you to securely store confidential passwords on your PC, preventing others from viewing them.



McAfee® Total Protection Quick-Start Guide

How to Use: Identity Protection

Simply choose the **Internet & Network** section from the main SecurityCenter page and select the **Configure** option. Choose the **Personal Information Protection** tab and select **Advanced**.

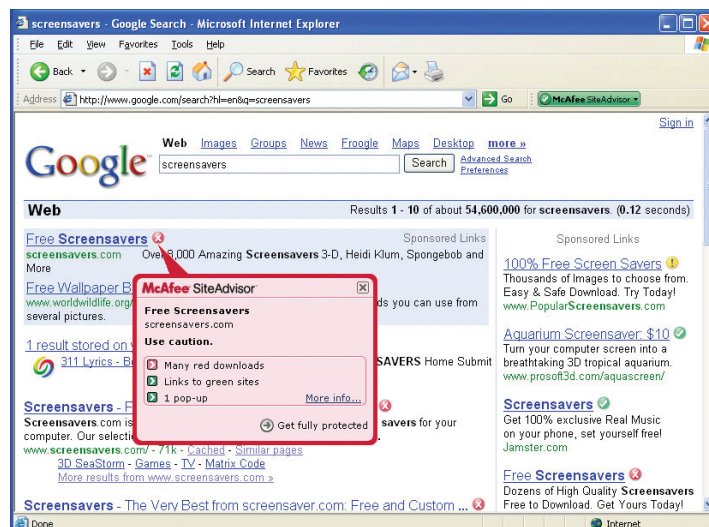


What's New: McAfee SiteAdvisor

SiteAdvisor adds safety ratings to sites and search engine results based on comprehensive spam, adware, and online scam safety tests.

How to Use: McAfee SiteAdvisor

Once downloaded and installed SiteAdvisor does all the work for you. When searching with Google, Yahoo!, MSN, or others, SiteAdvisor's safety ratings appear next to search results and a small button in the browser toolbar changes color based on SiteAdvisor's security tests.





McAfee® Total Protection Quick-Start Guide

What's New: Wireless Network Protection

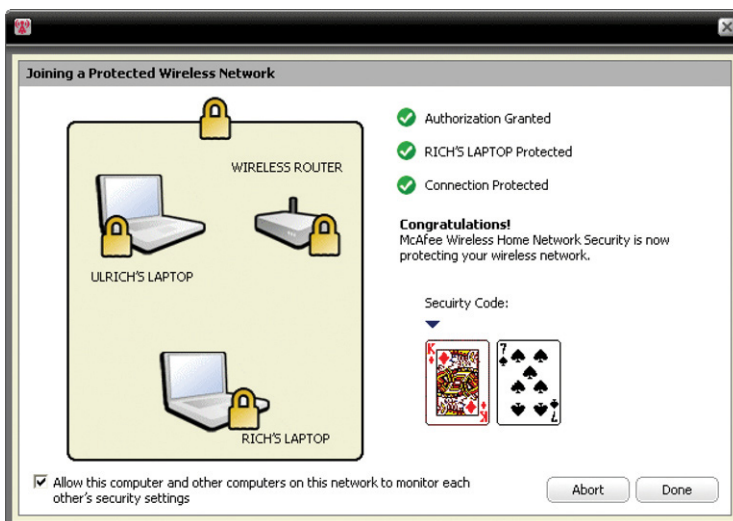
Your product includes Wireless Network Protection that eliminates networking hassles and wireless security risks. Its trusted protection that blocks hackers from attacking your Wi-Fi® network, safeguards your personal information and transactions, and prevents others from using your network to access the Internet – all with a single click.

How to Use: Wireless Network Protection

You can access Wireless Network Protection from a few locations. The wireless icon in your system tray, the Wireless Home Network desktop icon, from your programs menu or via McAfee SecurityCenter.



Once you access Wireless Network, you can simply allow your friends and family to connect to your secure wireless network. You can also use a USB drive or CD/DVD to easily grant access to your network. Improved Intelligent Alerts notify you instantly of computers trying to connect to your protected wireless network.





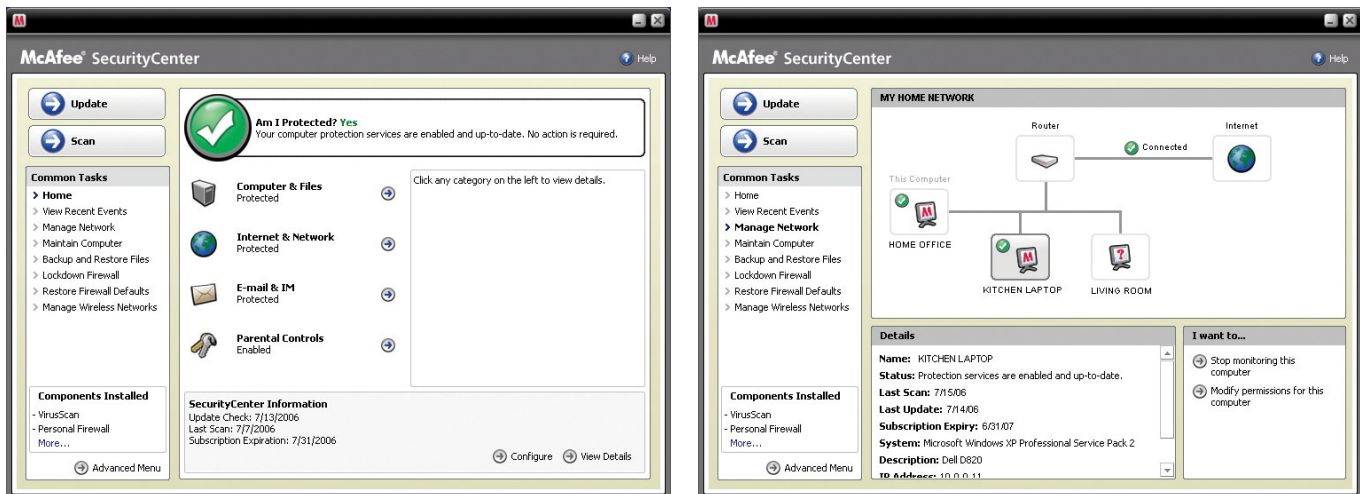
McAfee® Total Protection Quick-Start Guide

What's New: McAfee Network Manager

McAfee Network Manager presents a graphical view of the computers and components that make up your home network. You can use Network Manager to remotely monitor the protection status of each managed computer in your network and to remotely fix reported security vulnerabilities on those managed computers.

How to Use: McAfee Network Manager

Launch **Network Manager** from the SecurityCenter list of Common Tasks. The network map provides a graphical representation of the computers and components that make up your home network. To configure Network Manager – please refer to the Advanced Menu within SecurityCenter.



What's New: McAfee EasyNetwork

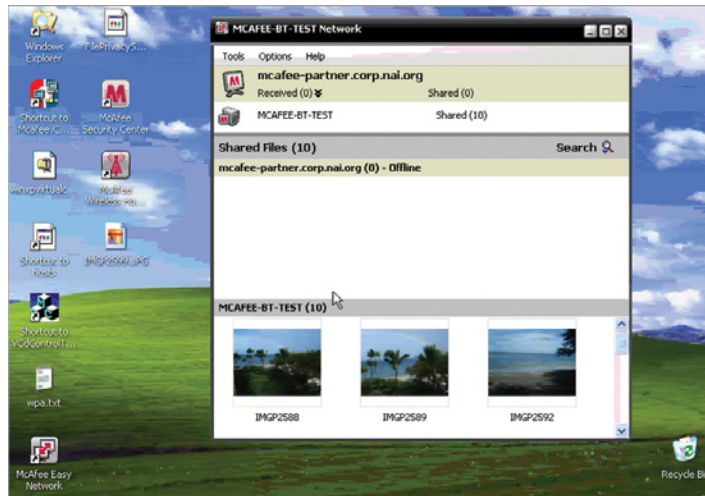
McAfee EasyNetwork allows you to share files and printers among the computers in your home network.

How to Use: McAfee EasyNetwork

Double-click the **McAfee EasyNetwork** desktop icon to start EasyNetwork. To learn more about how to configure this feature, please refer to the Advanced Menu within SecurityCenter.



McAfee® Total Protection Quick-Start Guide

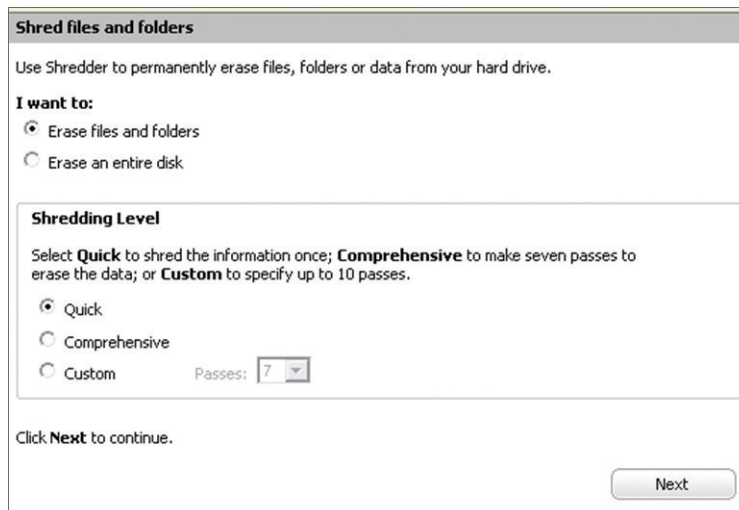


What's New: McAfee Shredder

Shredder allows you to digitally “shred” confidential files, effectively removing all traces of files from your PC, especially useful when passing on, selling, or simply discarding older PCs. This new feature enhances your privacy by helping to eradicate the digital footprints left behind by erased files that hackers or other unauthorized users can access.

How To Use: McAfee Shredder

Select **Shredder** under “**Tools**”, you can easily erase files, folders or even an entire disk.





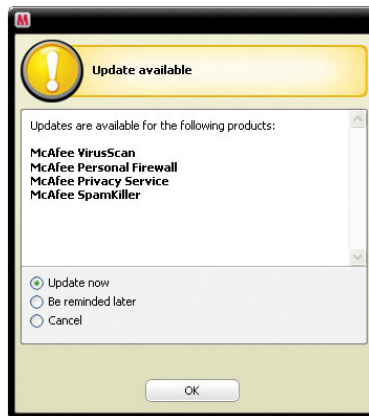
McAfee® Total Protection Quick-Start Guide

Making Sure You're Secure

McAfee makes sure you are always secure by continuously and automatically upgrading and updating your protection.

Automatic Software Updates and Upgrades

As long as your subscription is active, SecurityCenter will automatically upgrade your McAfee programs whenever new or improved features become available.



Protection Status and Security Alerts

SecurityCenter also informs you with a Protection Manager Alert whenever your security status changes to yellow or red. When you see one of these alerts, click the **Balloon** or **Icon** to open SecurityCenter, so you can review and react to the issue.

